

# The AAI Bili Uele program

## An introduction and update

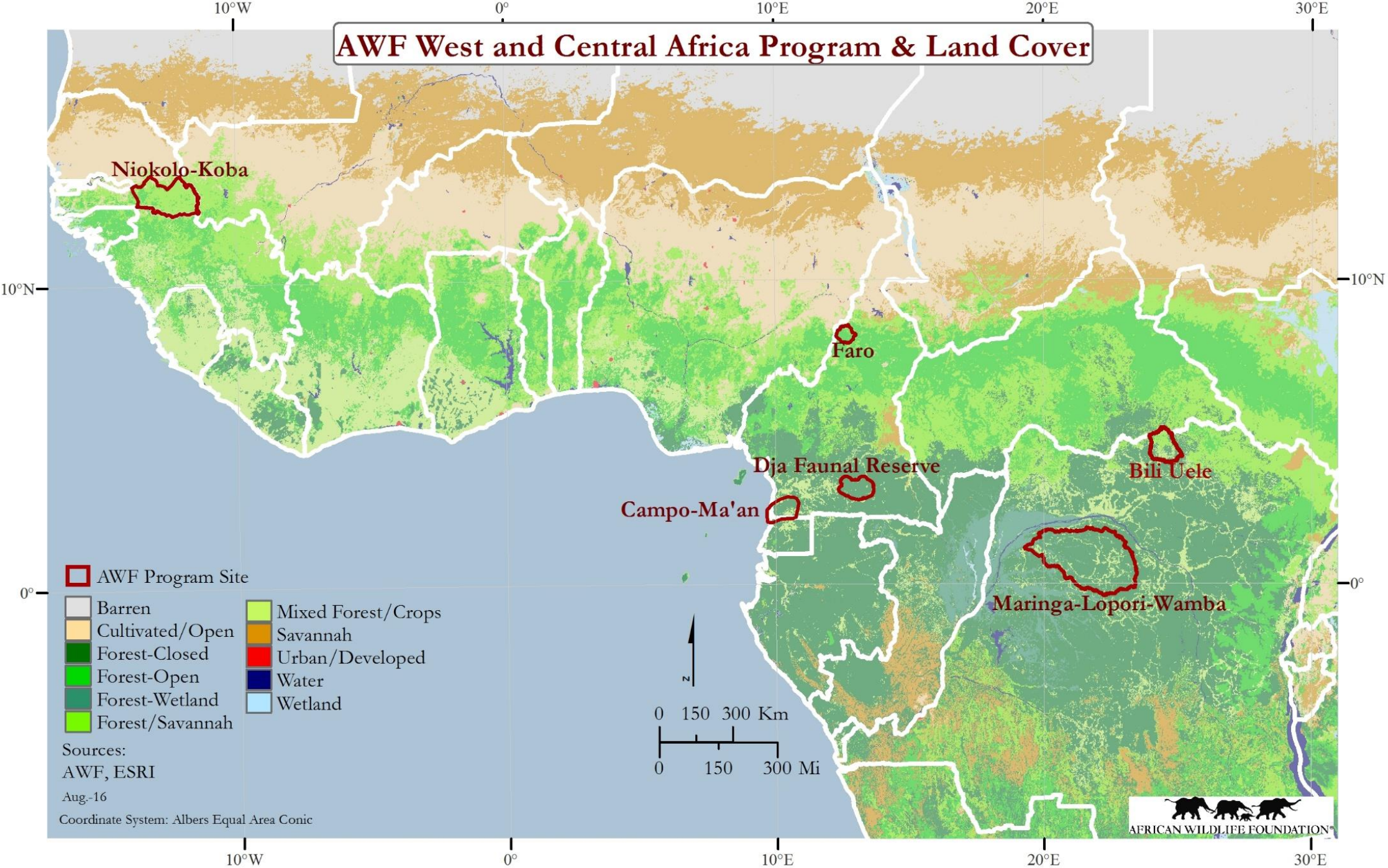
*Jef Dupain*



AFRICAN WILDLIFE FOUNDATION®



# AWF West and Central Africa Program & Land Cover

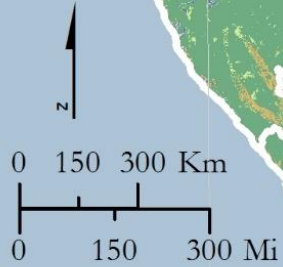


AWF Program Site

- Barren
- Cultivated/Open
- Forest-Closed
- Forest-Open
- Forest-Wetland
- Forest/Savannah
- Mixed Forest/Crops
- Savannah
- Urban/Developed
- Water
- Wetland

Sources:  
AWF, ESRI  
Aug-16

Coordinate System: Albers Equal Area Conic

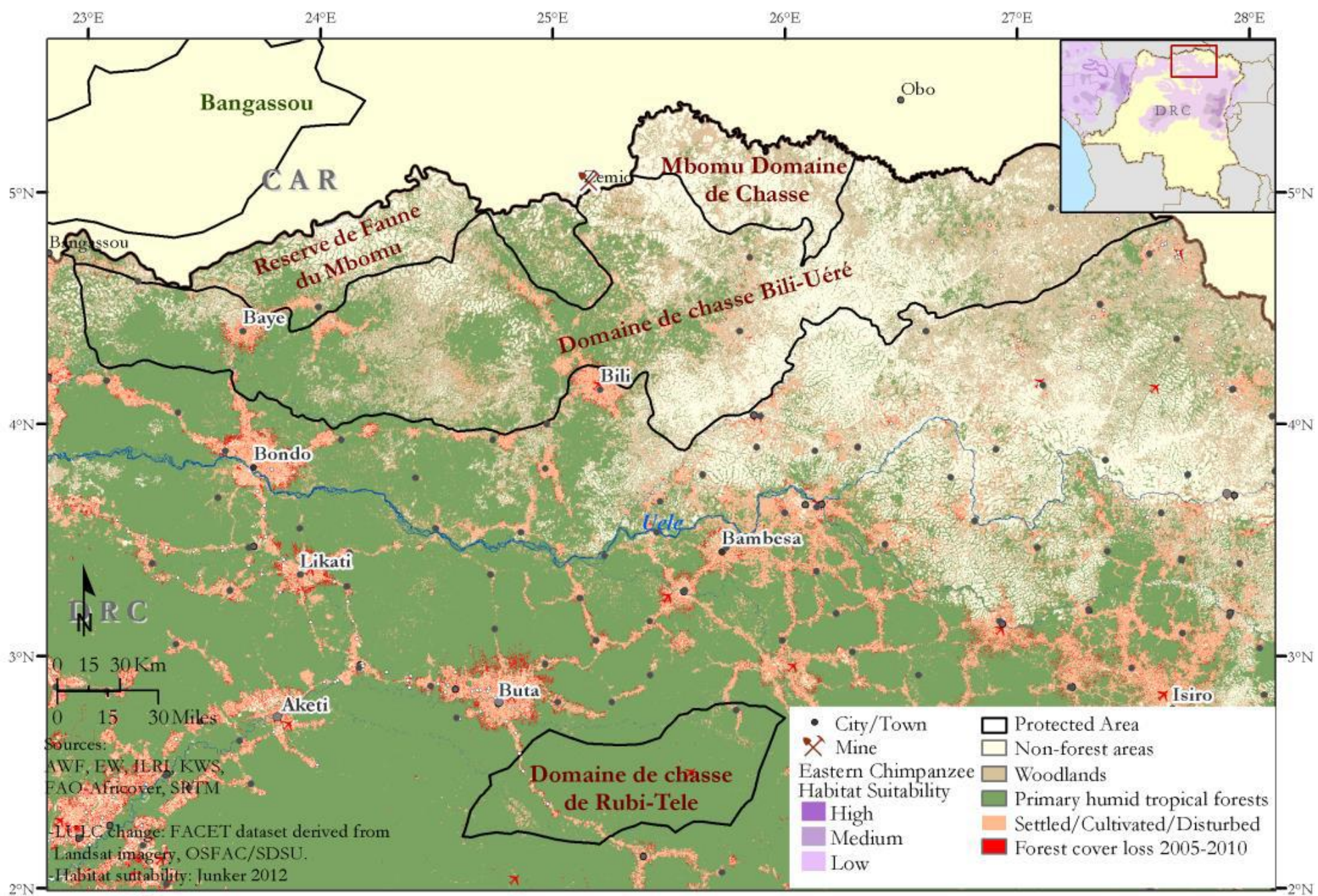
















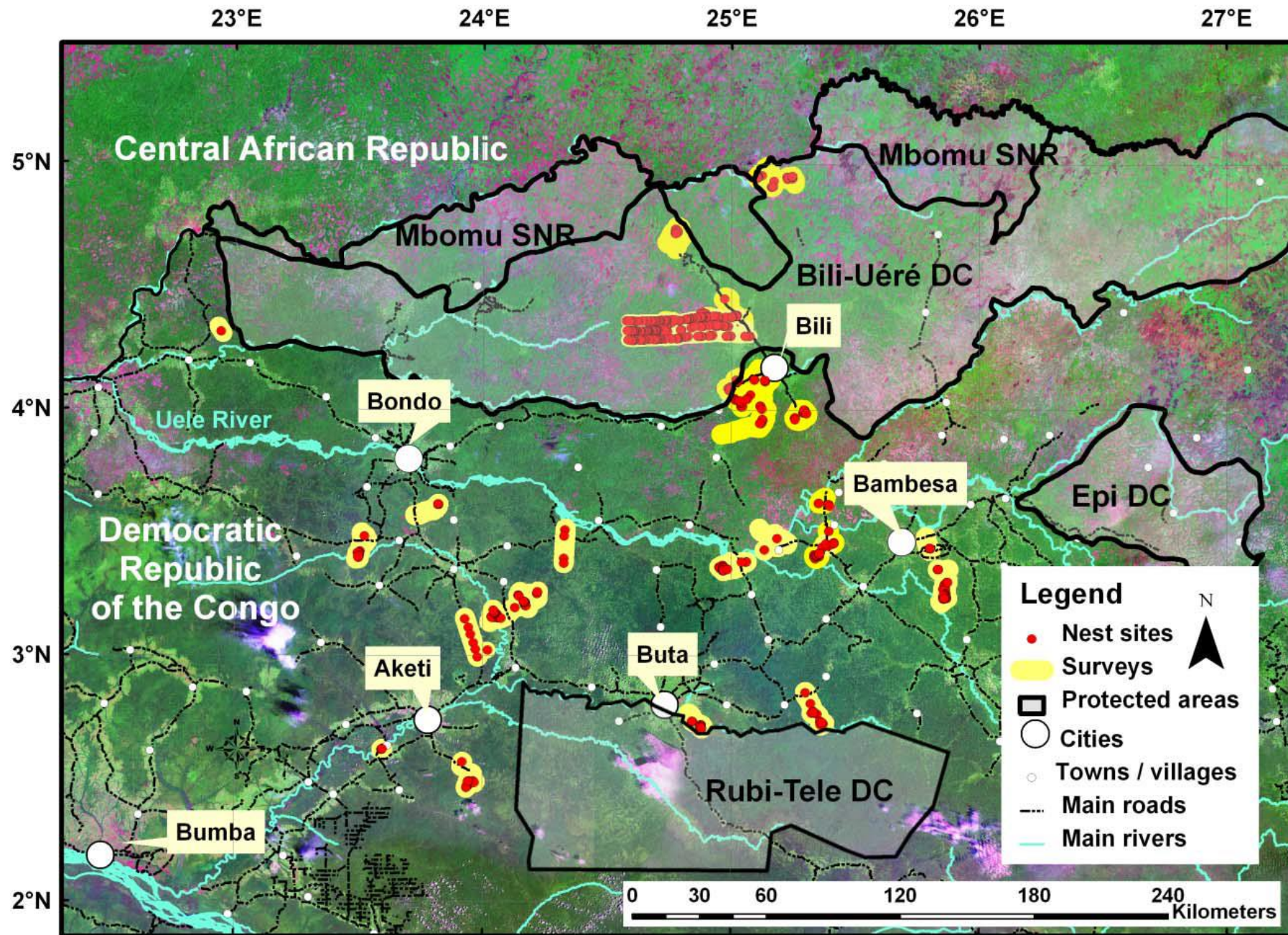
# African Apes Initiative Objective

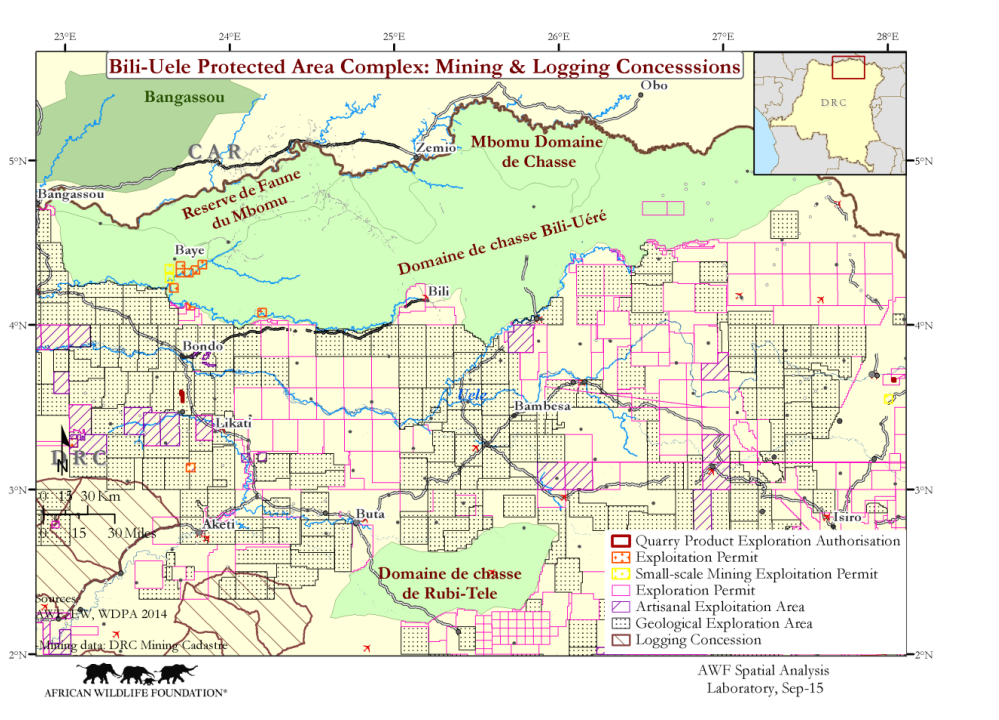
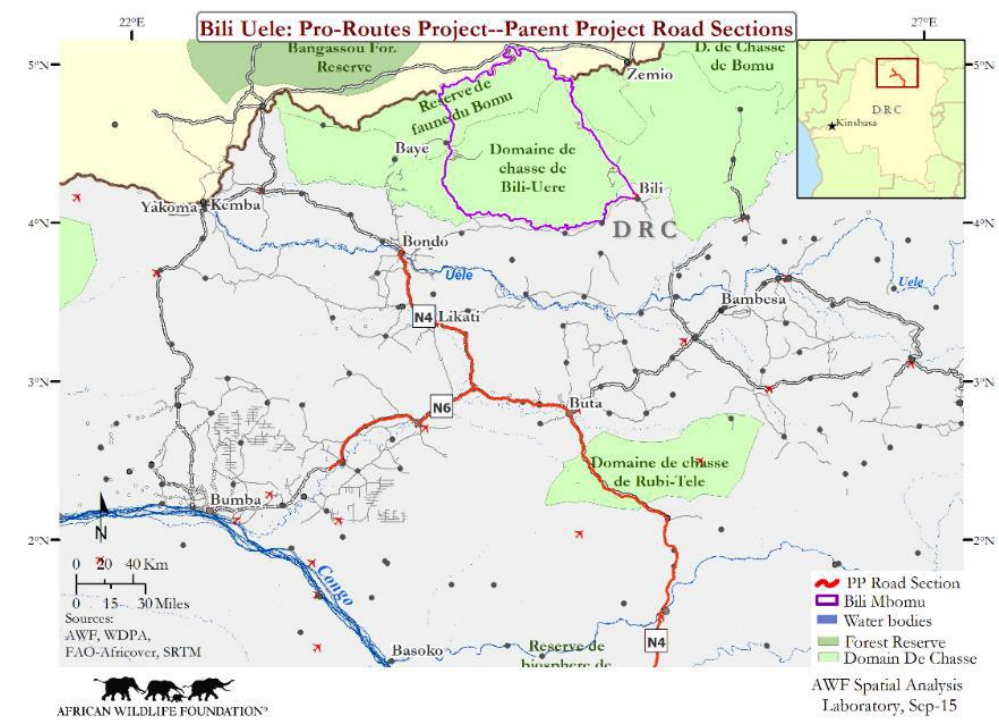
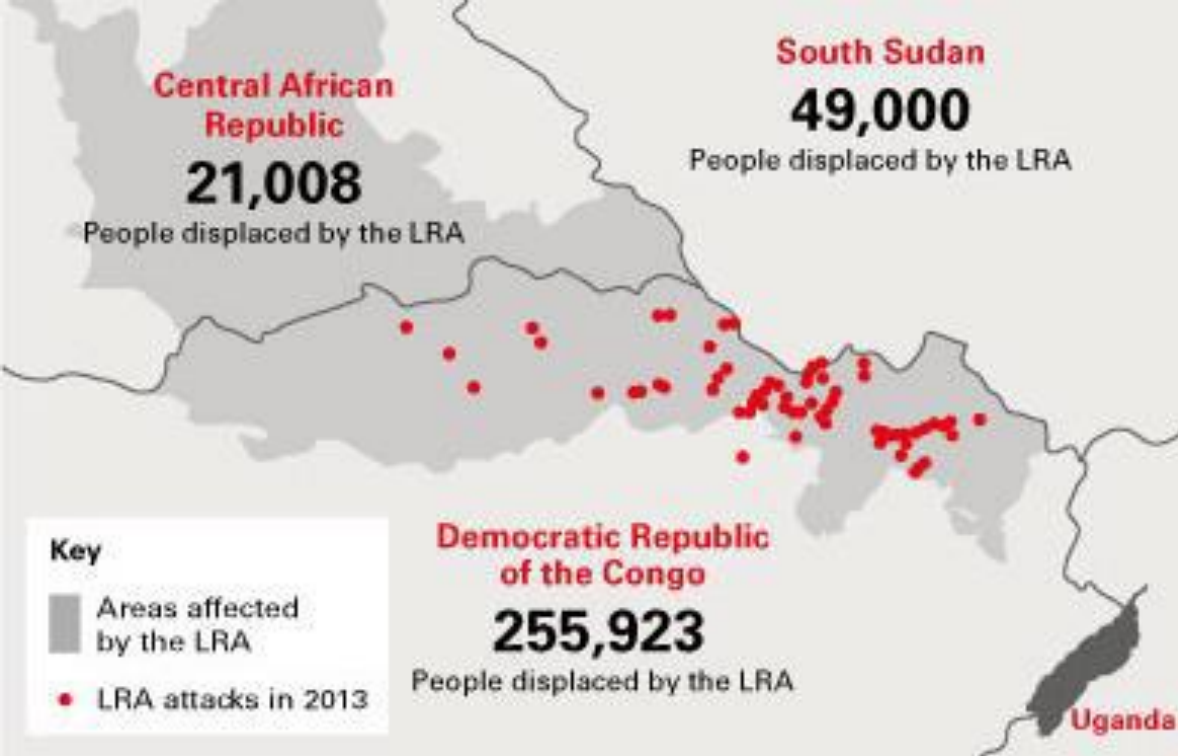
- Contribute to the long term conservation of representative populations of all nine subspecies of African apes and their habitat
- Contribute to the development of effective conservation efforts by actively organizing cross-site and cross-species approaches;
- Facilitate development of an African Ape Conservation Toolkit Package



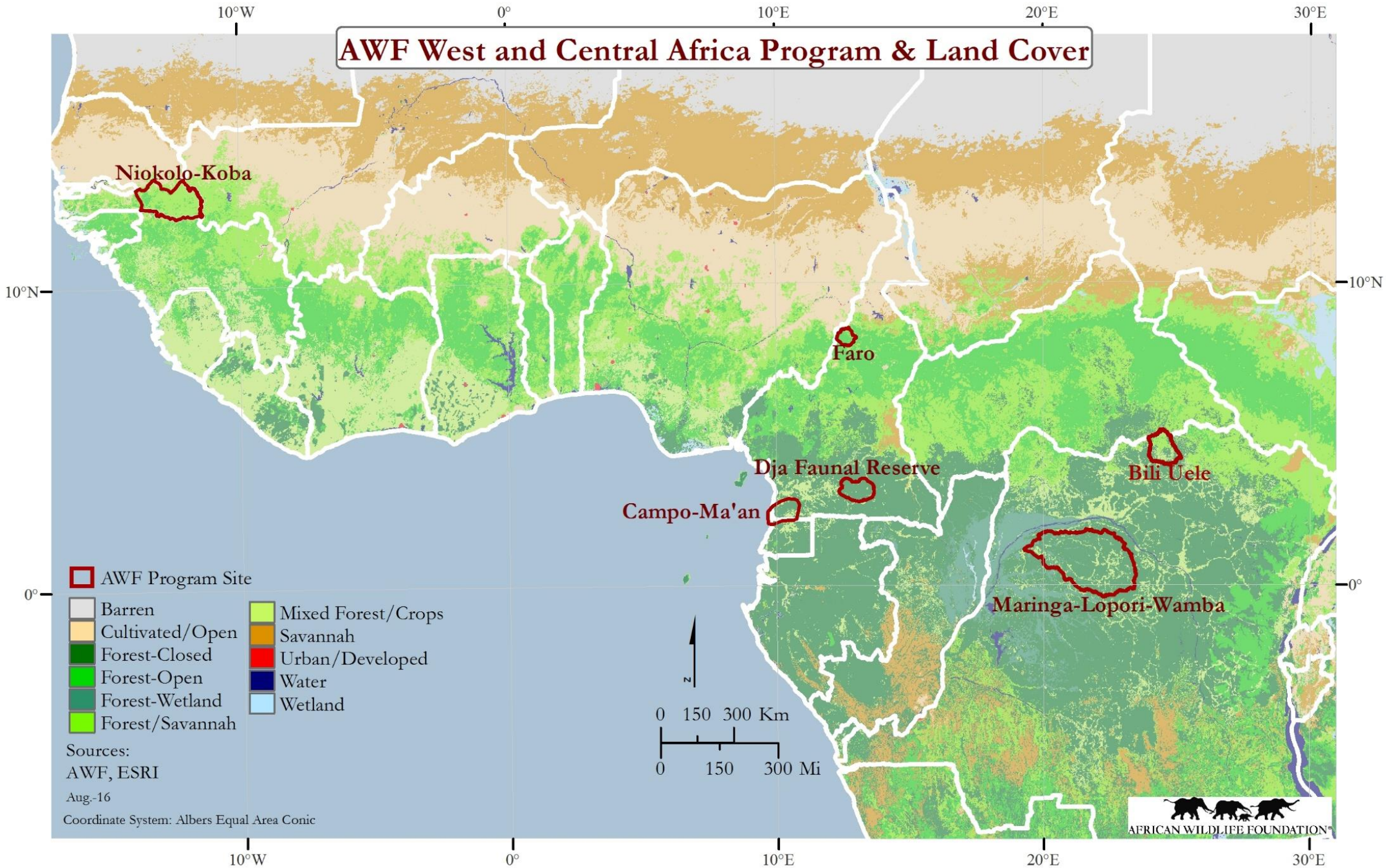








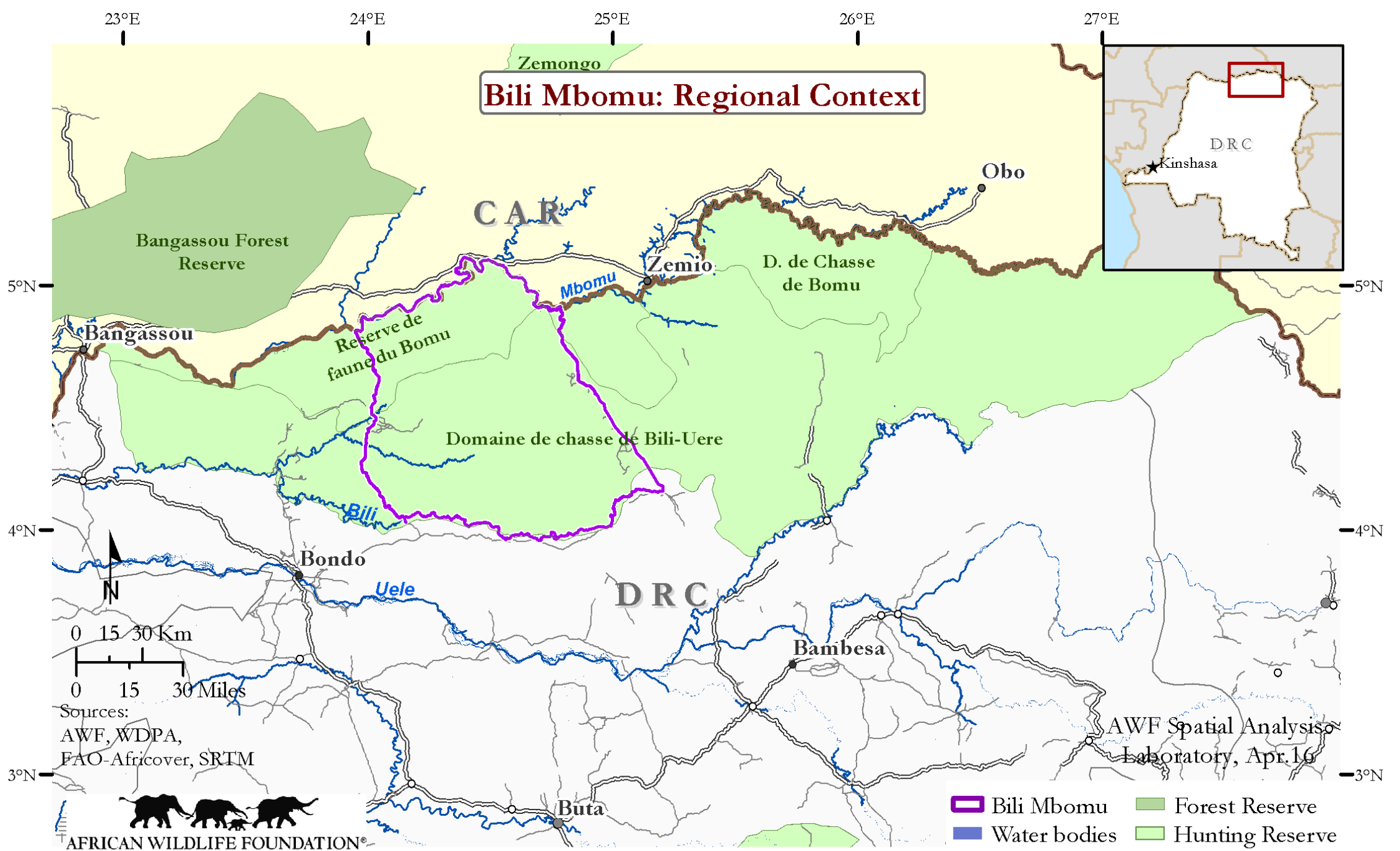
# AWF West and Central Africa Program & Land Cover













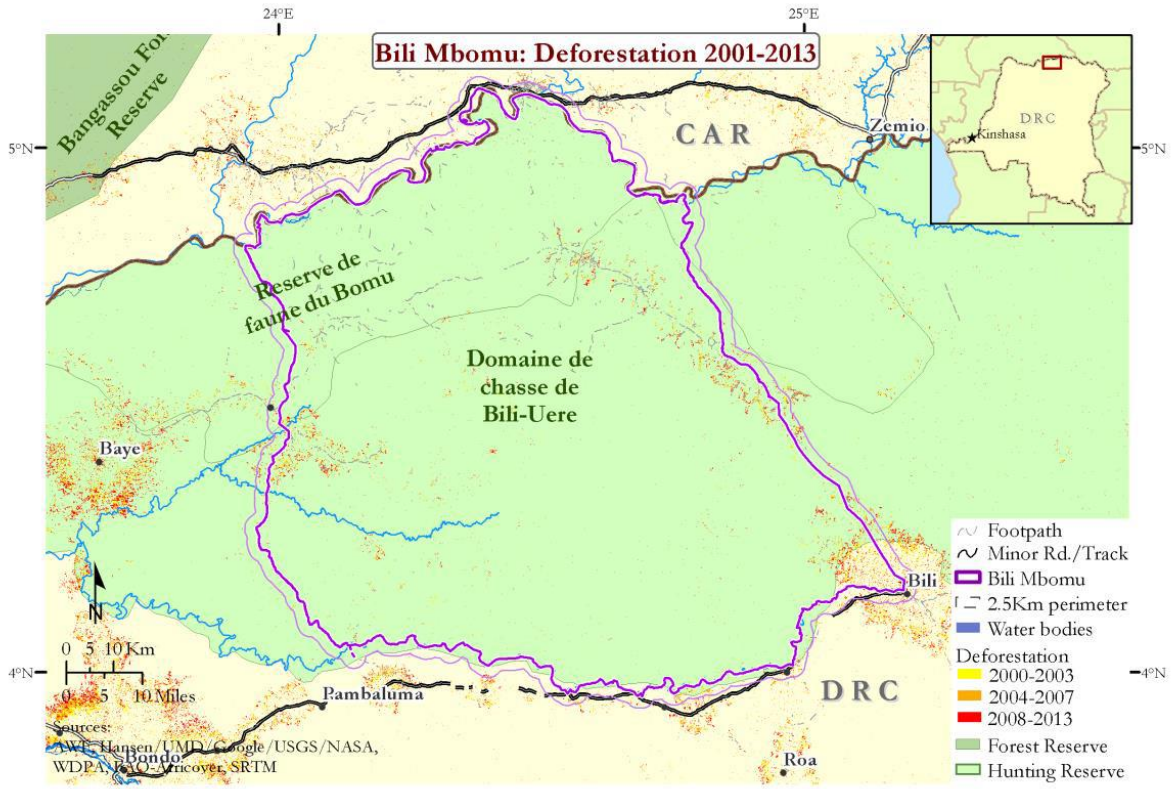




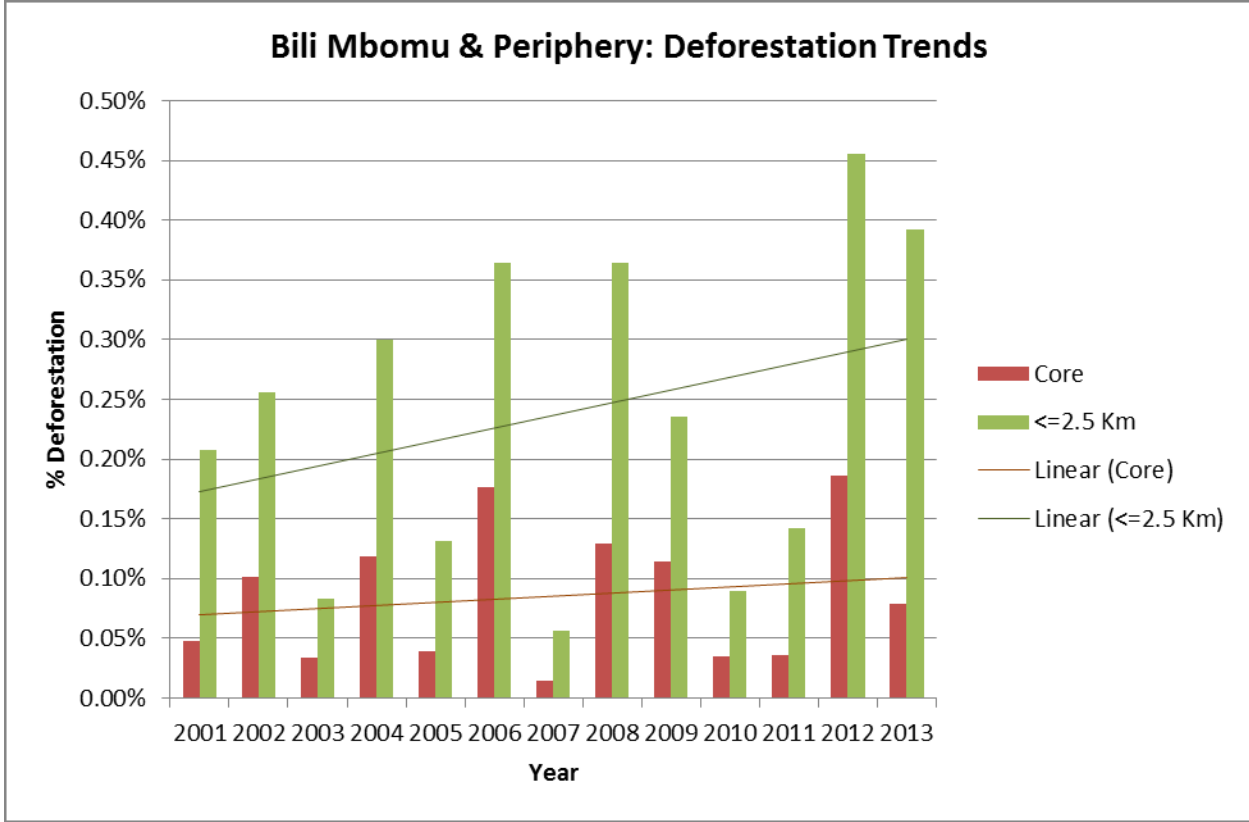




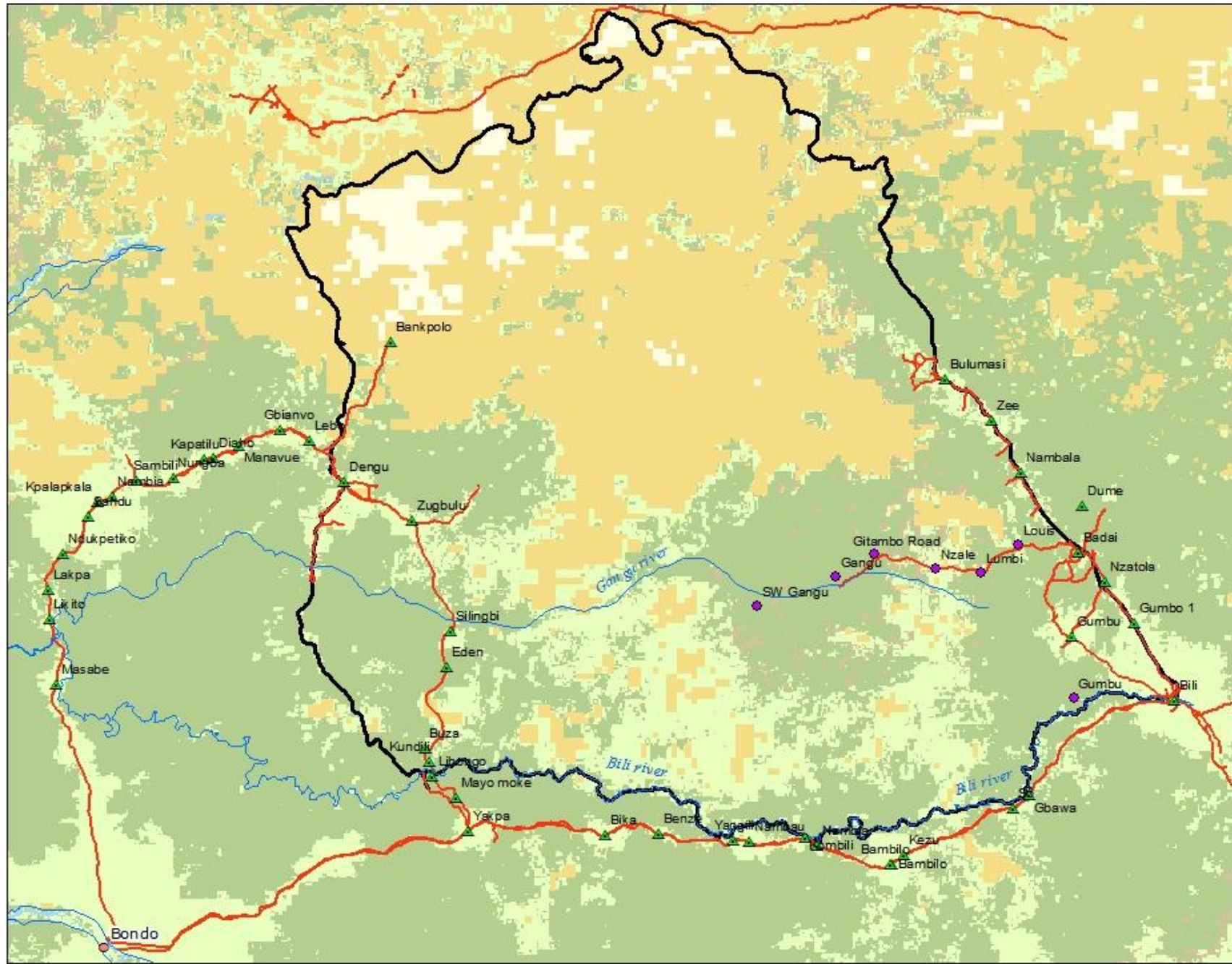


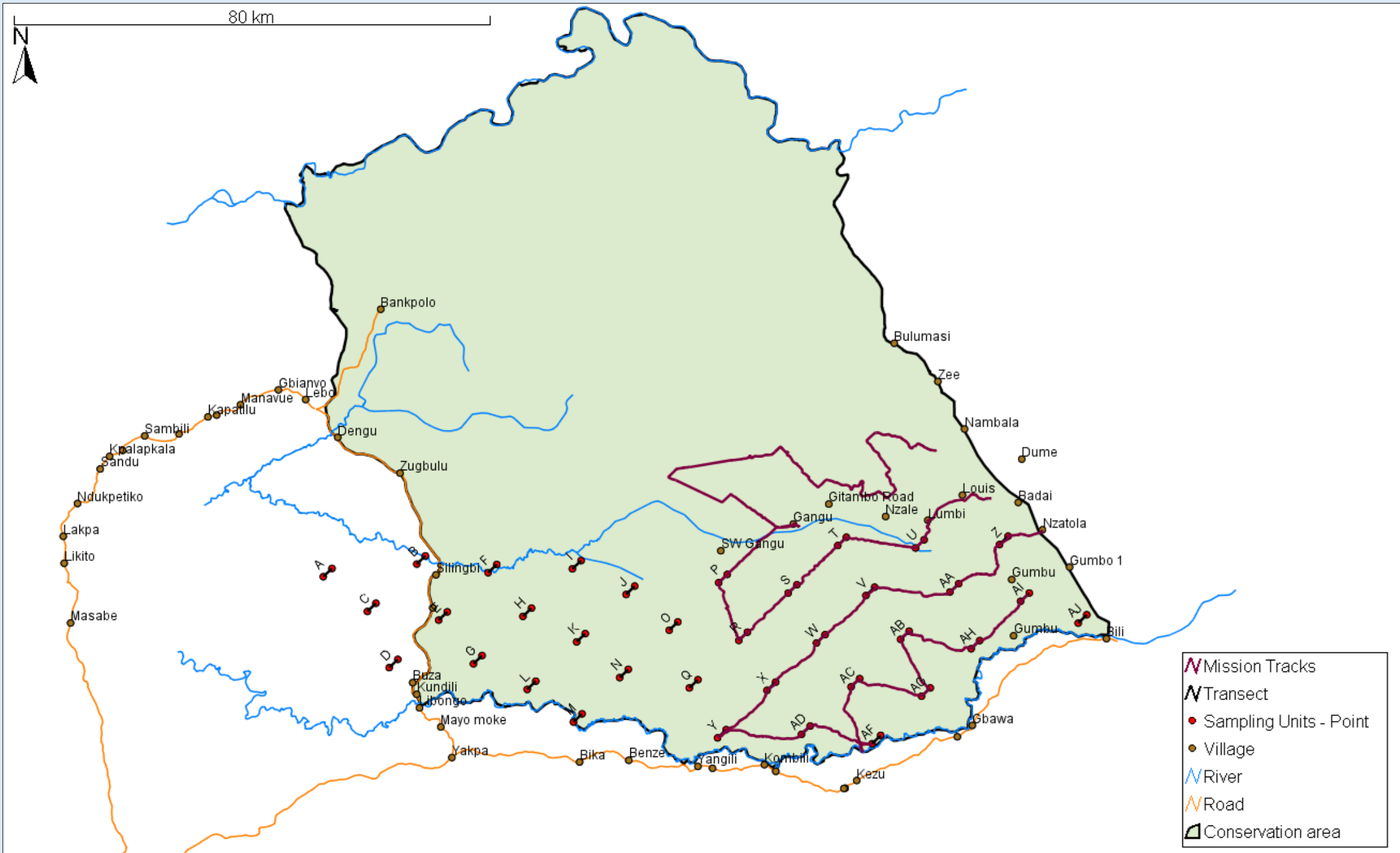


AWF Spatial Analysis Laboratory, Aug-15

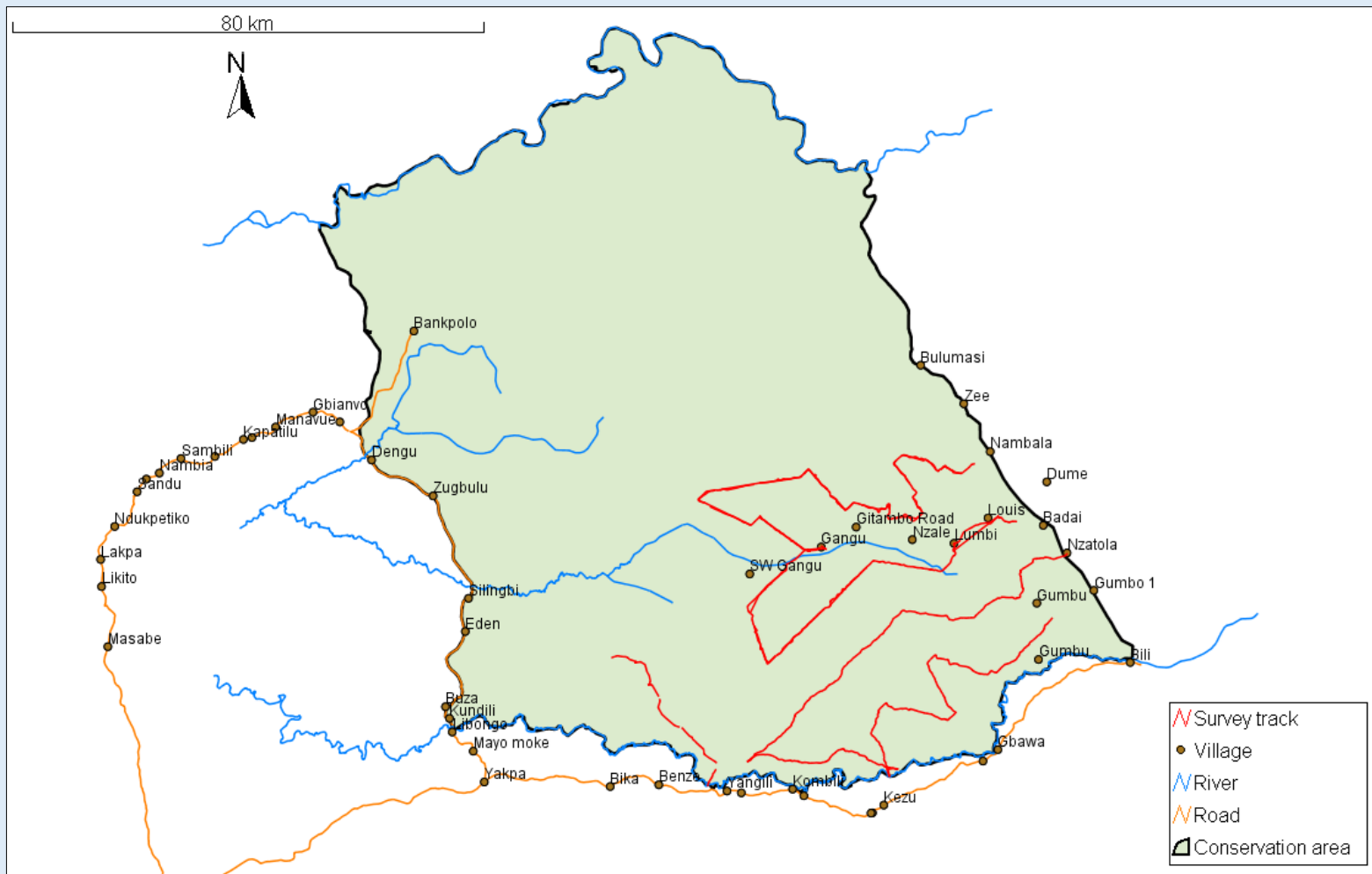


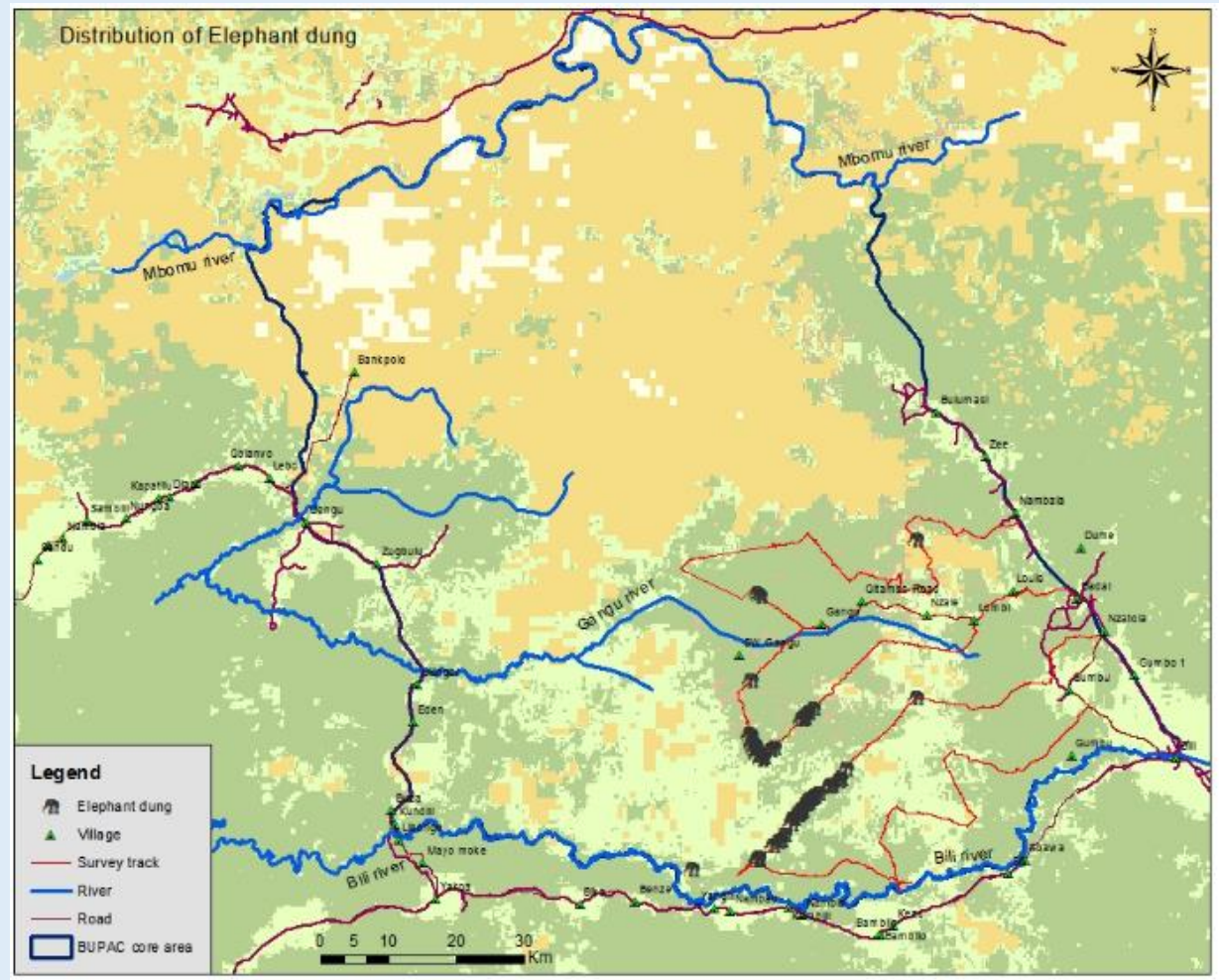
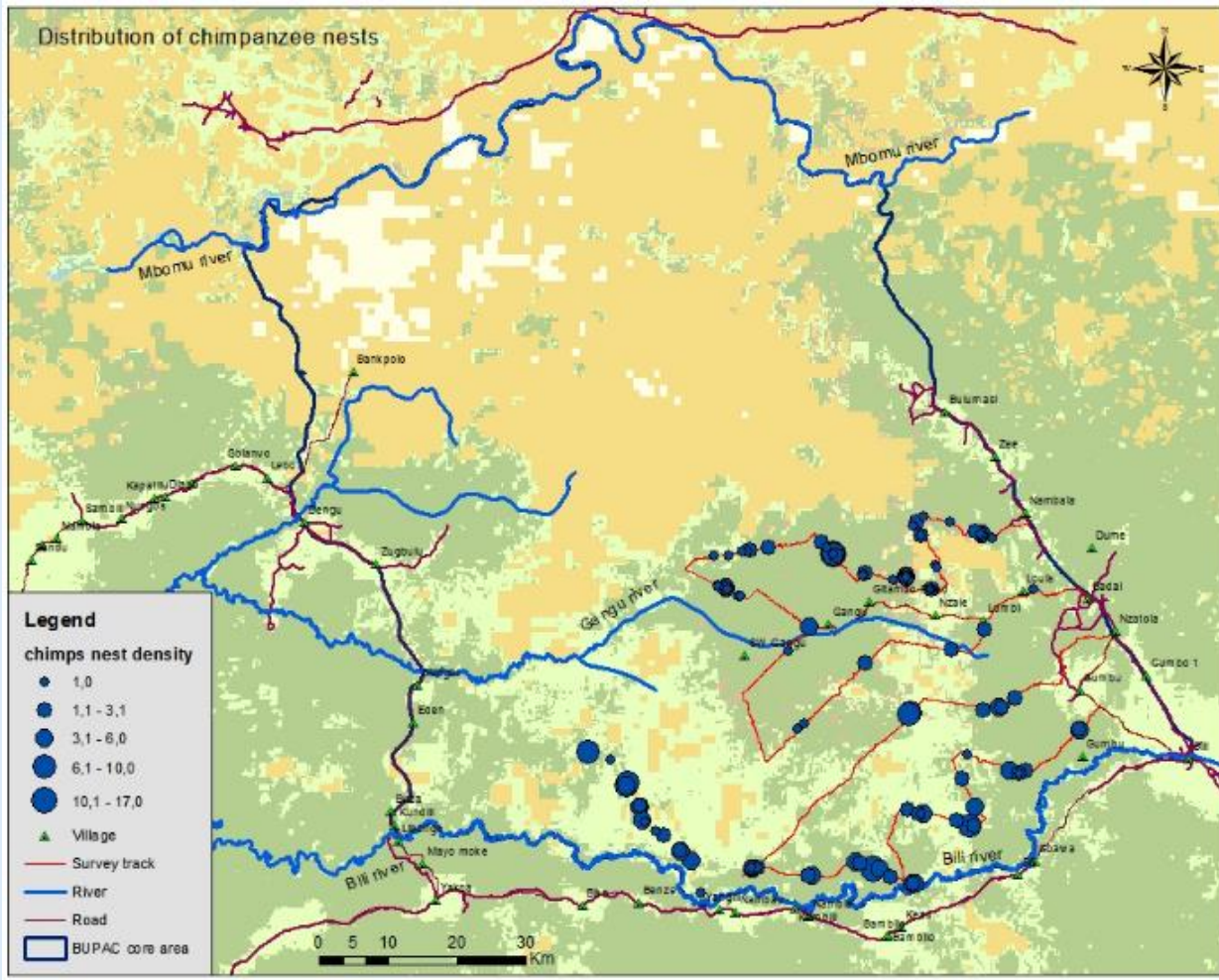




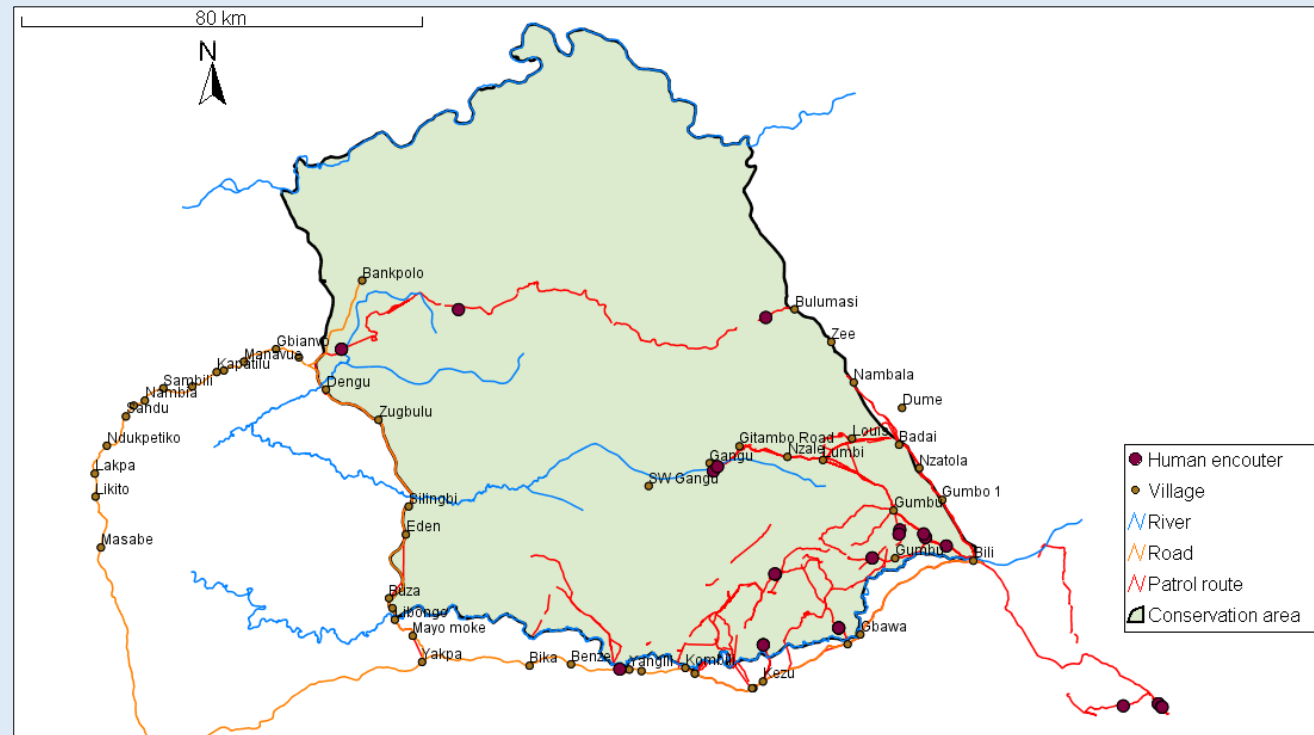


Species	Type of observation	Number of observation	
<i>Cephalophus dorsalis</i>	Dung	18	
<i>Cephalophus monticola</i>		35	
<i>Cephalophus nigrifrons</i>		48	
<i>Cephalophus silvicultor</i>		39	
<i>Cephalophus sylvicapra</i>		2	
<i>Panthera pardus</i>		2	
<i>Potamochoerus porcus</i>		23	
<i>Syncerus caffer</i>		46	
<i>Tragelaphus eurycerus</i>		26	
<i>Tragelaphus scriptus</i>		2	
<i>Crocuta crocuta</i>		1	
<i>Hippotamus amphibius</i>		2	
<i>Hyemoschus aquaticus</i>		3	
<i>Kobus ellipsiprymnus</i>		1	
<i>Loxodonta africana</i>		196	
<i>Loxodonta africana</i>		Site dung	60
<i>Cercocebus agilis</i>		Direct observation and vocalization	33
<i>Cercopithecus ascanius</i>			52
<i>Cercopithecus mona denti</i>			3
<i>Colobus guereza</i>	10		
<i>Lophocebus albigena</i>	52		
<i>Orycteropus afer</i>	Burrow	21	
<i>Pan troglodytes</i>	Site nest	158	
<i>Pan troglodytes</i>	Nest	326	





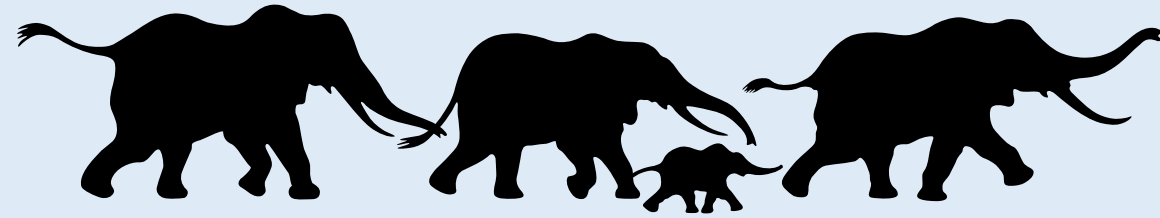
Period	Number of day	Distance (km)	Number of patrol	Number of employees	Number of hours	Person - hour
sept-15	6	174,96	1	15	121,64	1824,66
oct-15	7	93,46	1	11	154,37	1698,04
nov-15	1	7,23	1	8	17,37	138,95
déc-15	22	371,24	3	20	483,19	4163,30
janv-16	11	129,41	1	9	249,73	2247,58
févr-16	15	198,50	3	22	286,06	2652,87
mars-16	11	69,02	1	5	234,88	1174,42
avr-16	7	72,83	1	11	150,38	1654,22
mai-16	32	309,69	3	16	700,09	4417,11
juin-16	14	68,62	2	14	315,54	2374,02
juil-16	13	80,69	2	19	266,26	2563,96
<b>Total</b>	<b>139</b>	<b>1575,64</b>	<b>19</b>	<b>150</b>	<b>2979,51</b>	<b>24909,14</b>







#ONASSIGNMENT



AFRICAN WILDLIFE FOUNDATION®